



# B1-1N-10-1S



Objekt



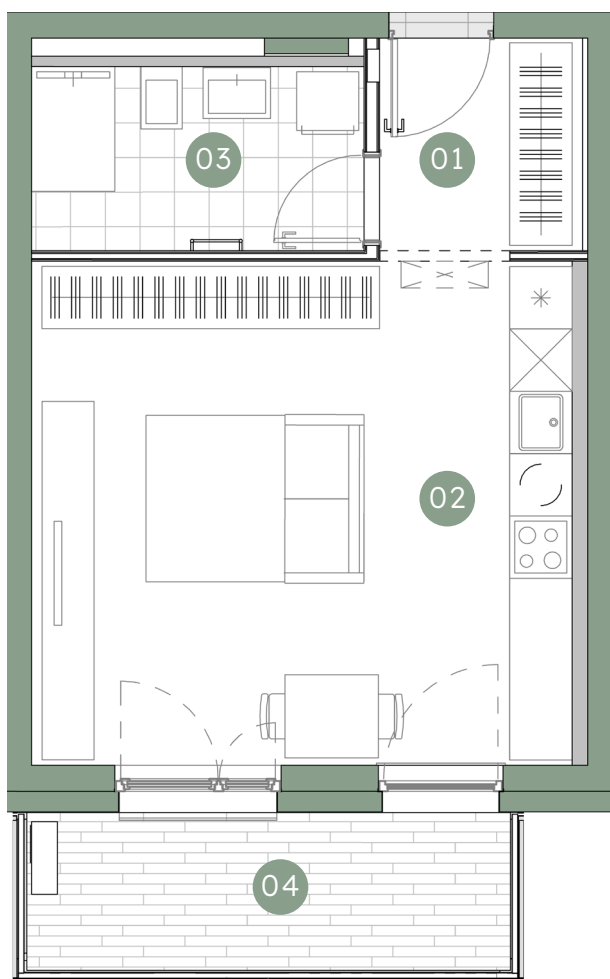
Lega v objektu



Nadstropje



Orientacija



01	Predprostor	4,16 m <sup>2</sup>
02	Dnevna soba, jedilnica, kuhinja	25,30 m <sup>2</sup>
03	Kopalnica	5,67 m <sup>2</sup>

**Stanovanjska površina 35,13 m<sup>2</sup>**

04	Balkon	7,23 m <sup>2</sup>
	Shramba v kleti	5,62 m <sup>2</sup>

**Skupaj prodajna površina 47,98 m<sup>2</sup>**



**B1-S19**

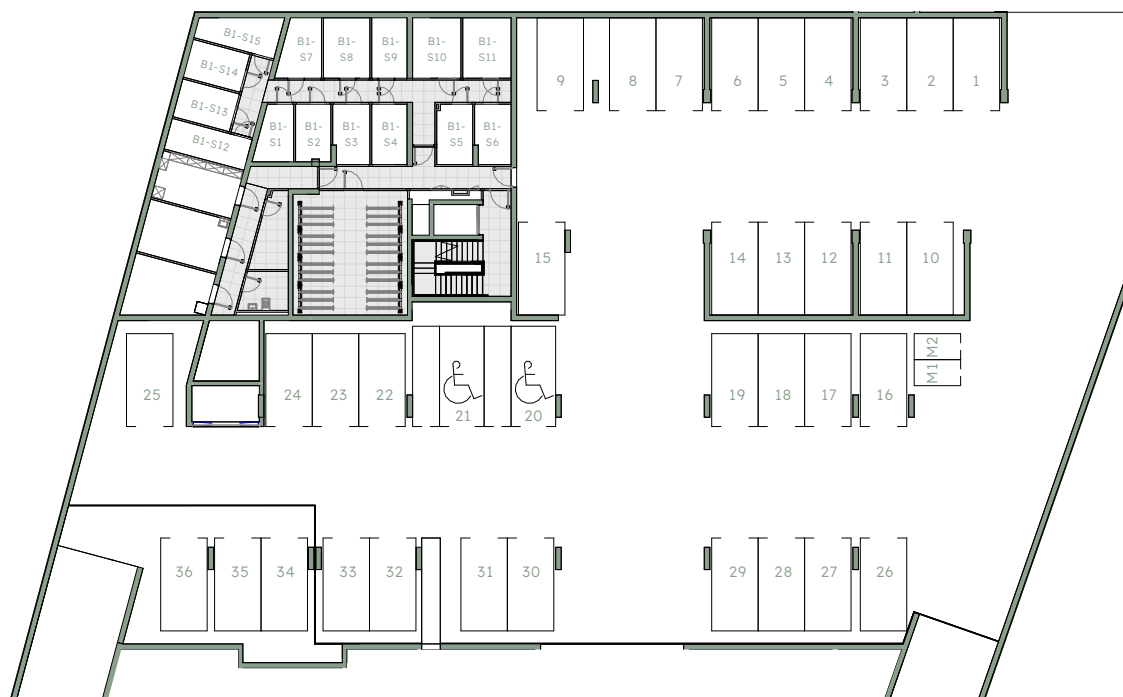
**5,62 m<sup>2</sup>**

**PM 130**

Shramba

Velikost

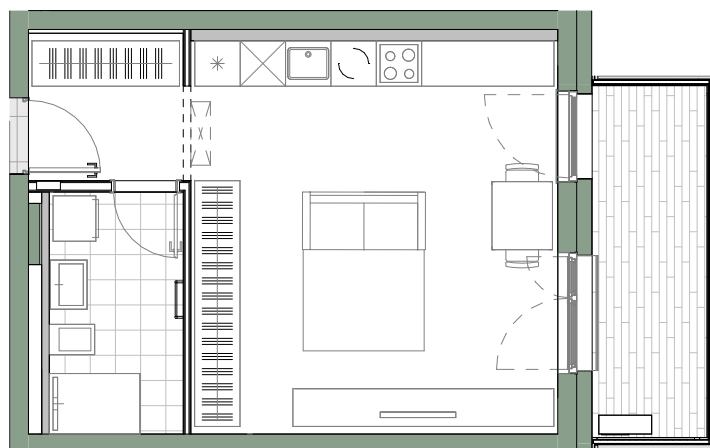
Parkirno mesto



-1 klet



-2 klet



m - 1:100