



# B1-2N-20-1S



Objekt



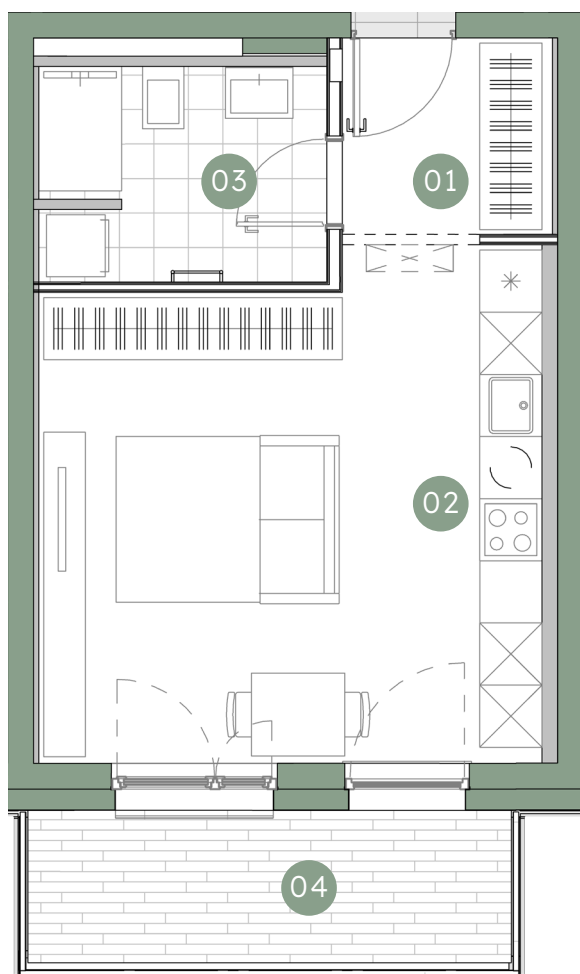
Lega v objektu



Nadstropje



Orientacija



01	Predprostor	3,97 m <sup>2</sup>
02	Dnevna soba, jedilnica, kuhinja	23,81 m <sup>2</sup>
03	Kopalnica	5,69 m <sup>2</sup>

**Stanovanjska površina 33,47 m<sup>2</sup>**

04	Balkon	7,23 m <sup>2</sup>
	Shramba v kleti	6,50 m <sup>2</sup>

**Skupaj prodajna površina 47,20 m<sup>2</sup>**



**B1-S33**

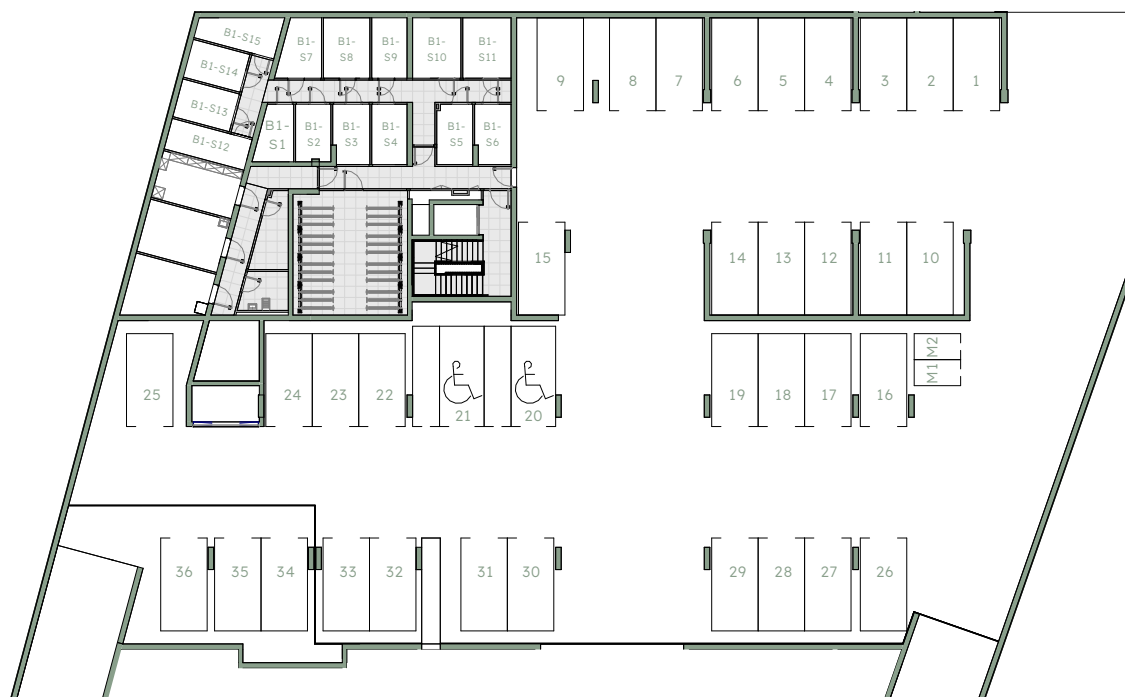
**6,50 m<sup>2</sup>**

**PM 127**

Shramba

Velikost

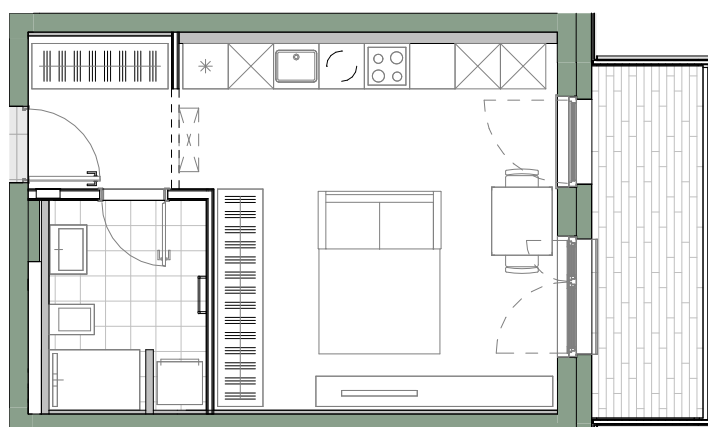
Parkirno mesto



-1 klet



-2 klet



m - 1:100