



# B1-0P-05-3S



Objekt



Lega v objektu



Nadstropje



Orientacija



01	Predprostor	3,75 m <sup>2</sup>
02	Hodnik	4,52 m <sup>2</sup>
03	Dnevna soba, jedilnica, kuhinja	31,79 m <sup>2</sup>
04	Spalnica	16,49 m <sup>2</sup>
05	Soba	11,82 m <sup>2</sup>
06	Kopalnica	4,70 m <sup>2</sup>
07	Dnevni WC	2,39 m <sup>2</sup>

**Stanovanjska površina 75,46 m<sup>2</sup>**

08	Loža	15,15 m <sup>2</sup>
09	Atrij	95,59 m <sup>2</sup>
	Shramba v kleti	7,81 m <sup>2</sup>

**Skupaj prodajna površina 194,01 m<sup>2</sup>**



**B1-S24**

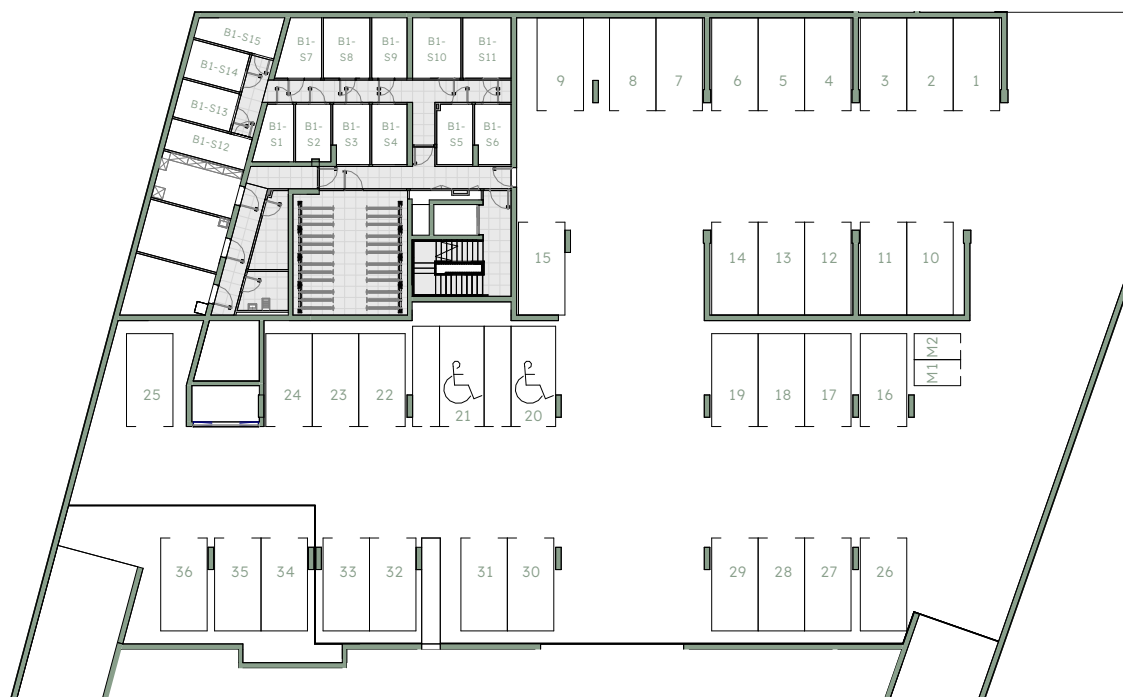
**7,81 m<sup>2</sup>**

**PM 115, PM 116**

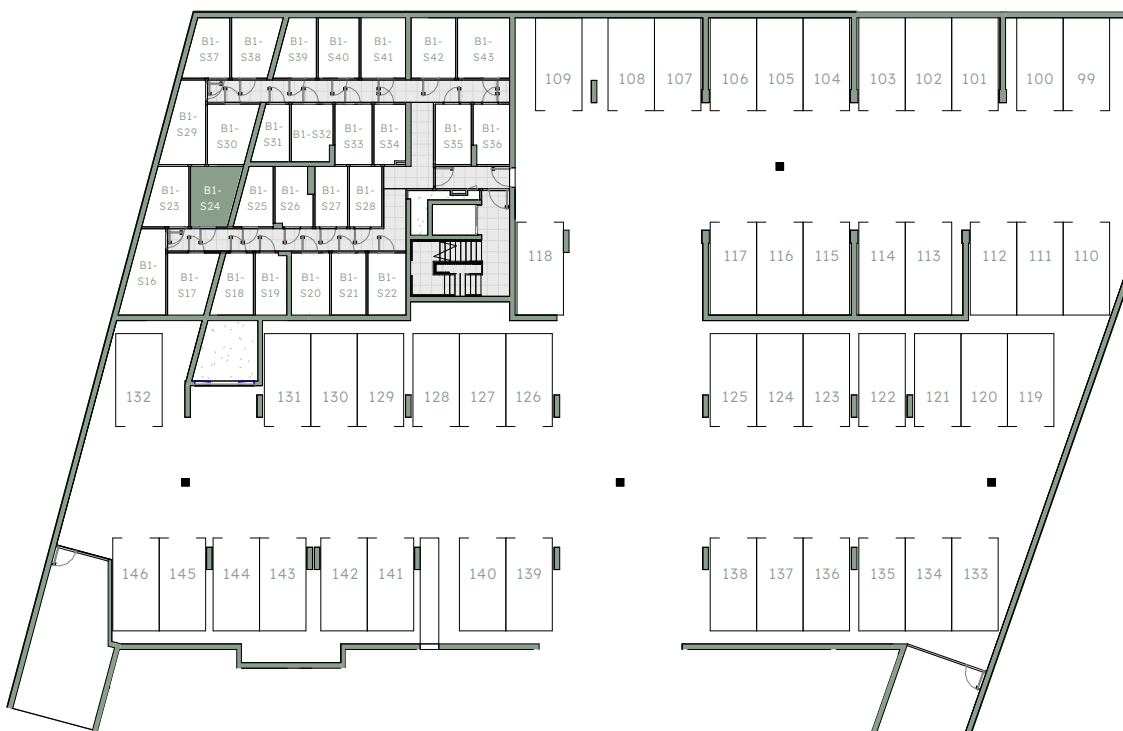
Shramba

Velikost

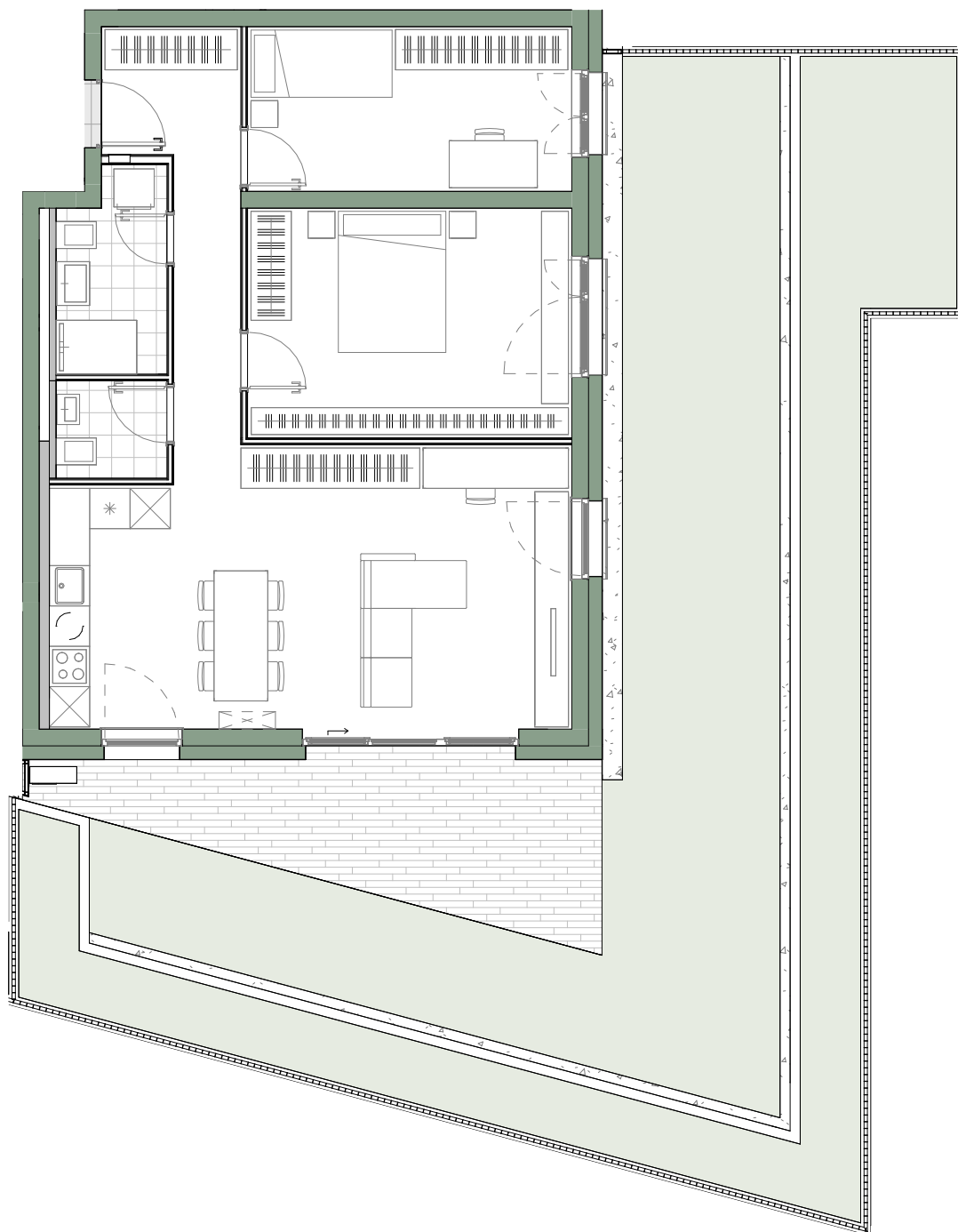
Parkirno mesto



-1 klet



-2 klet



m - 1:100